

# *TOOLS FOR LIFE!*



**Bleeding Edge Drywall & Plastering Technology.**



**Hardman  
Systems  
Industrial**

702 Kentucky St. # 451  
Bellingham, Washington 98225

1-877-474-7454

[www.hardmansystems.com](http://www.hardmansystems.com)



**“The life blood of HSI is its devotion to continual improvement in tool development and superior product dependability. Constantly improving customer service procedures and the implementation of continually streamlined processes will ensure low costs and strong customer relationships.”**

## **OUR STORY:**

In 1977, after experiencing many years of pain and exhaustion caused by running the "batch and refill" finishing tools, Richard Hardman (Sr.) decided to create a better way of doing things. For the next year he worked with various pattern makers, foundries, and machinists to come up with a system he believed would solve the technical shortcomings he encountered with traditional technology. In 1978, he and his son Rick took his prototypes to a church project they were doing in Independence, Oregon and gave them a try. Everything worked perfectly until the pump they used started developing problems. After much testing and effort, they realized that no pump on the market could provide the material flow in the manner needed to work with his new tool designs.

In 2008, through the development of 6 different prototypes, Rick arrived at a patentable pump design which provides the power necessary to produce a 30% time savings for the drywall contractor. Through the years of trial and error he realized that with a few minor modifications, his new pump could also be adapted to include paint, EIFS and other cement based products.

During the 34 years of development, a series of 18 different smaller tools were created ranging from a simple panel carrier to highly mobile spray application and texture machines known as the **"Raptor" A-1, A-2 and A-4** power systems. Several of the original tools are presented later in this brochure.

## **OUR PARTNERS:**

Hardman Systems' success relies on a strong relationship between the designer, manufacturer, and distributor to support drywall and plastering contractors working hard every day to put food on their tables.

The HSI product line provides only those tools essential to your needs. Each item complements the other with an overall strategy to reduce the labor of your work day, and to increase your profitability.

No sales fluff, and no pushing. We simply intend to make your life easier, within an average man's budget.

## **A 34 YEAR COMMITMENT TO YOU:**

Our commitment is to increase your profitability through product innovation, reliability and personal attention. Hardman Systems Industrial has a devotion to our clients unmatched in the Plastering and Drywall tool industry. HSI products far surpass the current generation of tools and will perform as a worker expects and the contractor requires. It started in 1977 and is even stronger today.



## Every Item: New Technology!



### Pivoting Mixing Paddle with Lifetime Warranty

The NE-516 mixing paddle incorporates an extended shaft and pivotal mixing blade designed to conform to the bottom and sides of the mixing chamber. This ensures a much faster and efficient blending process. High technology UHMW material ensures easy cleaning by use of its self lubricating substrate. It also offers interchangeable mixing blades.



### Lift Grip Hand Protectors

A completely new concept in the movement and relocation of panel materials, the JR-2911-I Industrial Lift Grip protects the users hand from pinching, blistering and fatigue often encountered with the transportation of sheet type products.



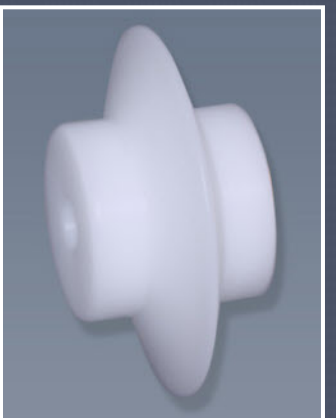
### IS-4110 Glass Applicator

The 4110 Fiberglass Mesh Applicator is a hand held extendable device which speeds the installation of adhesive backed mesh and the new FibaFuse tape by up to 60% faster than the current methods of application. A replaceable front section allows the use of different attachments to provide the application of wider and other coil wound products.



### Corner Slider

An accessory to the IS-4110 Fiberglass applicator, the IS-4008 Corner Slider offers its greatest advantages to the plastering and EIFS contractor. By applying light pressure through its extendable handle, mesh tape and other bridging materials are firmly and accurately applied to inside corner angles.



### Focus Product: 3 Point Creaser Wheel

An aftermarket accessory for the drywall industry's automatic taper, the EZ-116 Corner Creaser Wheel spans large gaps in inside corner angles by supplying a 3 point continuous anchoring method as it rolls along angular seams. Far better than the industry standard, this innovative product has a 100% positive feedback record with drywall contractors across the USA and Canada.

The 3 Point Creaser Wheel also reduces the sliding and pulling away of drywall tape coming out of corners. It speeds the use of the corner roller by providing an improved overall embedment of the tape.



While discussing with Advance Equipment the parameters of a **“Made in U.S.A.”** manufacturing relationship for the Contractor Grade Pivoting Mixing Paddle (shown on the following page), it became obvious that Advance has an exceptional dedication to quality and customer service. For 5 generations beginning with the design of the first drywall knife, Advance has (through private label agreements) been making many of the tools you have been using for years.

HSI is proud to offer the following Premium Grade hand tools made by Advance. We rate them as the highest quality and most durable hand tools available anywhere.



### Cool Grip II Stainless Steel Taping Knives

The Cool Grip II knives are the result of the team at Advance Equipment working diligently to create an exceptional grip option you don't want to miss out on. Different from the standard Cool Grip design, the Cool Grip II has an excellent resilient grip with a slightly tighter feel for superior control and flexibility of movement.



### Cool Grip® Stainless Steel Taping Knives

The Cool Grip finishing knives provide you with a cushioned grip to help alleviate strain and discomfort while at the same time leaving a smooth surface for easy cleaning. By merging the best materials and design features, the Cool Grip knives can help you produce your best professional results.



### Offset Taping / Finishing Knives featuring the Cool Grip II Handle

If you haven't used offset knives you need to give them a try. With a more prominent “spring” feel they flex and conform to your particular wrist movements and pulling directions to give you an ease of use that is different than standard knives. Try one and see if you like it. We recommend starting with a 12 inch knife, then later give the full set a try.



## New Technology!

### Contractor Grade Pivoting Mixer

Placing the pivoting blade precisely on the bottom of the chamber for maximum effectiveness, this mixer's plastic blade also rides along the wall of the bucket to keep it clean without causing damage. Those little plastic "strings" that are scraped into your mud by steel paddles will never be a problem again!



### High Production Skip Trowel / Knock Down Knives

The Long Handle gives you easier reach to the lid and less bending down to catch the bottom of the wall. They are excellent tools providing you with the finest quality Skip Trowel textures and maximum Knock Down coverage.



### Short Handle Production Skip Trowel / Knock Down Knives

For those looking for a closer feel and tighter control with all of the production benefits of the long handled knives shown above.



### High -Tech Poly Carbonate Knock Down Knives

A new development for Knock Down texturing, the Poly Carbonate plastic gives you a lighter track across the surface of the mud. This helps eliminate the flat spots with surfaces that pull moisture unevenly.



### Focus Product: EZ-Grip Mud Pan

#### Ergonomic EZ-Grip Mud Pan - Heli-Arc Weld

You must have this pan! It combines an excellent Ergonomic rounded design for comfort and a textured exterior for superior gripping. Its inside curvature allows you to scoop and draw your mud easily. This pan is a breeze to clean and will give you a more comfortable work day.

## Mixing Paddle

"Once you realize it's mixing power and adjust,  
it's the best thing for mixing on the market today."  
— Peck Drywall and Painting

## Fiberglass Taper

"This is the best tool I've ever seen!"  
— Union Local President

"It did exactly what you said it would do..."  
— Jon France / Tigard, Oregon



## HSI Lifetime Warranty with Continual 24/7 Support

HSI offers a lifetime warranty to ensure you a perfectly operating tool throughout your entire career. In the event a product does not perform to your full satisfaction, please return it for a refund. We don't want anyone to own a Hardman Systems tool they may not be happy with.

To order individual tools visit "New Products" at [www.hardmansystems.com](http://www.hardmansystems.com).

To establish a corporate account with volume discounts:

### Rick Hardman

R&D / Corporate Alliances

Corporate Office: 877-474-7454

Cell Phone: 778-858-7100

Email: [rhardman@hardmansystems.com](mailto:rhardman@hardmansystems.com)



*TOOLS FOR LIFE!*

**Rick Hardman**  
Research & Development - Corporate Alliances

[rhardman@hardmansystems.com](mailto:rhardman@hardmansystems.com)

702 Kentucky St. Ste: 451  
Bellingham, Washington 98225

P: 1-877-HSI-7454  
F: 1-877-474-7454  
(dial "8" for fax)

[www.hardmansystems.com](http://www.hardmansystems.com)